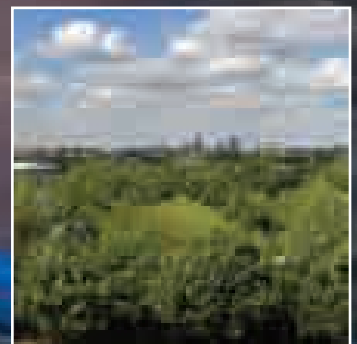
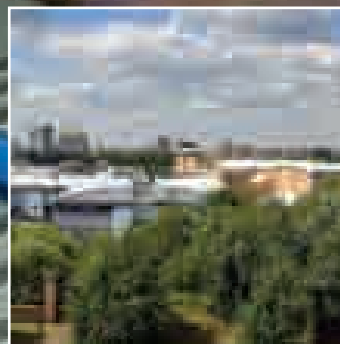
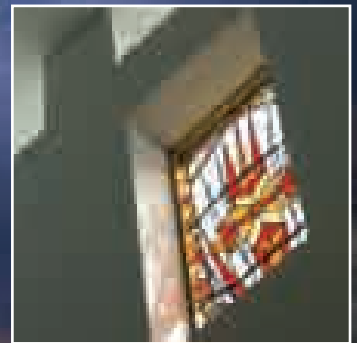
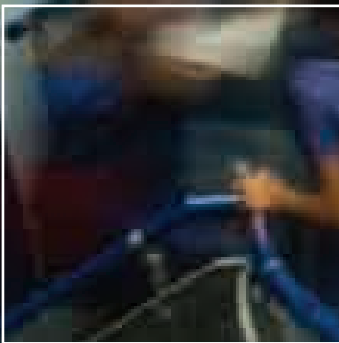
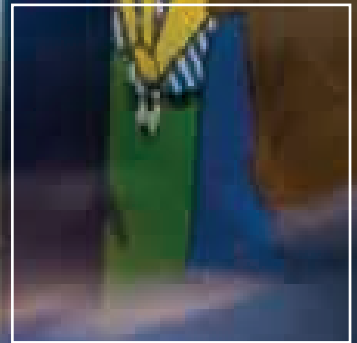
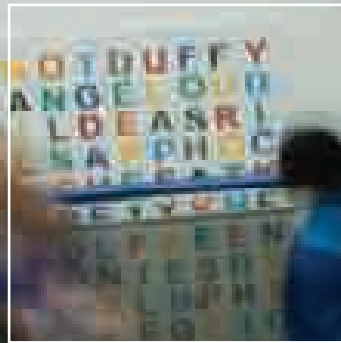
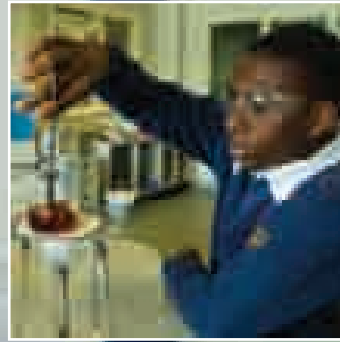
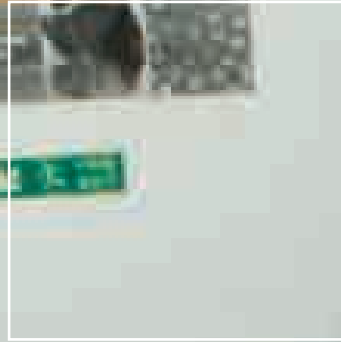
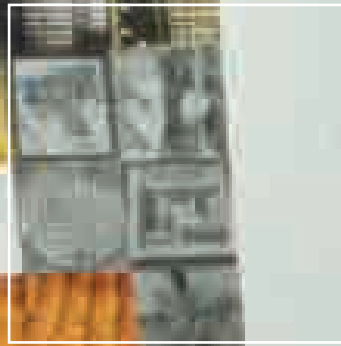




‘ ... teachers are open
and receptive to
students’ needs ... ’



“ ... a sense of security ... ”

Foundation

Who we are

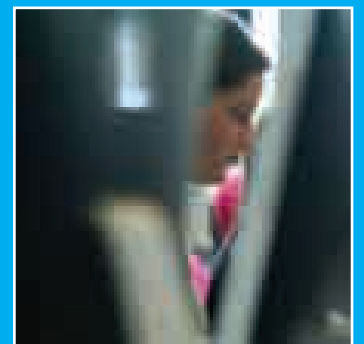
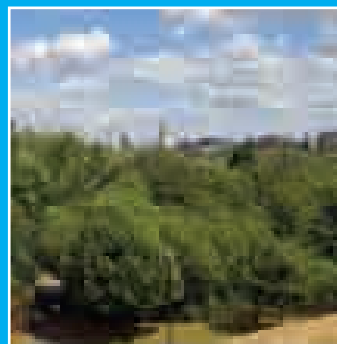
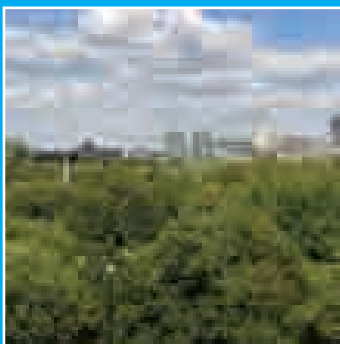
Bacon's College is a Church of England sponsored Academy. It was built on a brown field site in the heart of London Docklands and opened as a City Technology College in 1991: it converted to Academy status in September 2007.

The lead sponsors of Bacon's College are the Southwark Diocesan Board of Education and the Philip and Pauline Harris Charitable Trust, along with a representative of the Department for Children Schools and Families. The representatives of these sponsors form a Board of Trustees: a company with ultimate responsibility for the College. The Board of Trustees nominate a Board of Governors who together with the Principal have responsibility for the day-to-day running of the College.

‘... we have a buzzy, can do attitude ...’

The ‘original’ sponsor of the school was Josiah Bacon, a local leather merchant who founded Bacon's School in Bermondsey in 1703 to ‘teach spelling, arithmetic and merchant's accomplishments’.

Bacon's is a name, therefore, deeply rooted in the local community. The College is an 11-19 all ability Academy which specialises in Digital and Media Technology. It has fine modern buildings with excellent facilities.



Ethos

Our identity

Bacon's has a distinct identity with its Anglican Foundation and long history allied with the most modern approaches to teaching and learning.

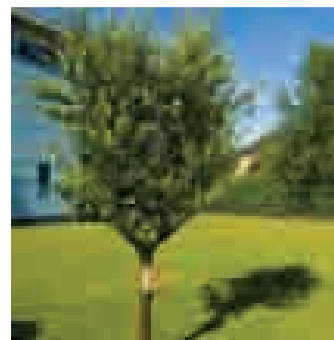
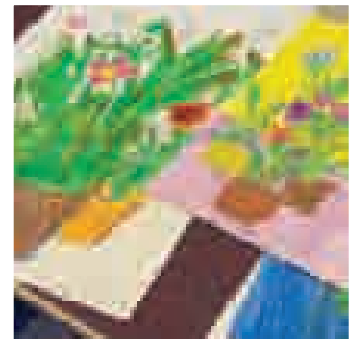
Bacon's College was founded within the tradition of "Faith in the City" with the Church, in part, fulfilling its mission by seeking to provide an excellent school in the inner city for its students, their families and their communities.

Bacon's is an inclusive College serving its local community and welcoming students of all faiths and those with no faith. It is not a proselytising institution but has a distinct Christian ethos.

Bacon's is outward looking and dedicated to the communities it serves. We believe that all students are equal and uniquely valuable in the eyes of God and have vast potential for development and growth if provided with the care and support of the College.

The College operates a 'Worship and Citizenship' programme supported by the College Chaplain, which is inclusive and promotes social and spiritual growth.

... lots of different groups of people brought together ...





‘ ... we look at what needs to be done
... nothing stands still for very long ... ’

Our Mission

The highest standards

Bacon's expects, whatever the background of each student, that they will aim for the highest standards and levels of attainment possible.

There is an almost tangible sense of purpose around the College directed towards raising aspirations and expanding horizons.

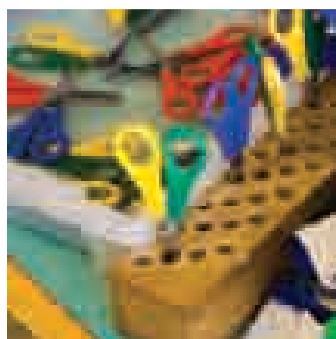
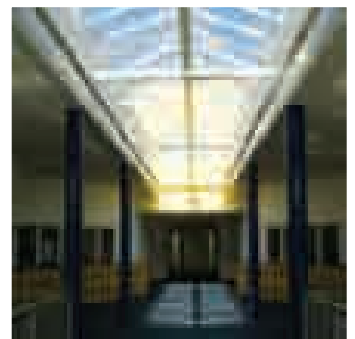
All of our students are expected to aspire to sixth form and higher education courses; we could be said to be 'getting them ready for University', or the equivalent from when they arrive.

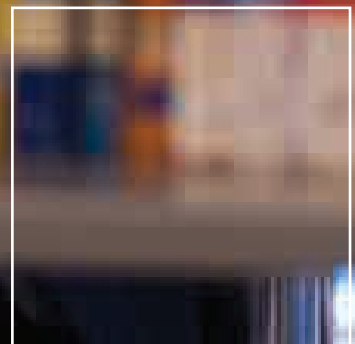
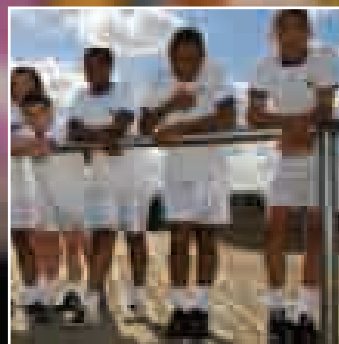
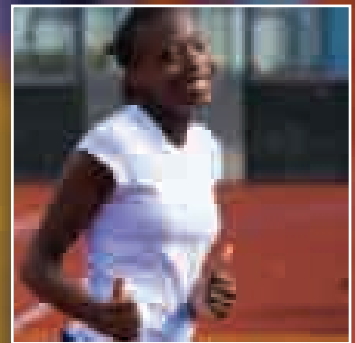
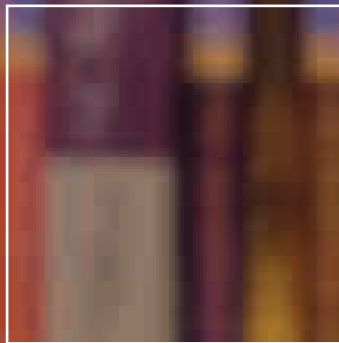
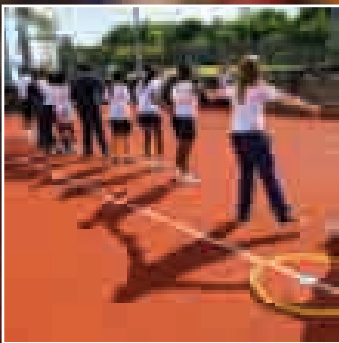
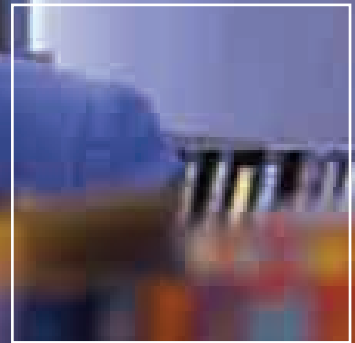
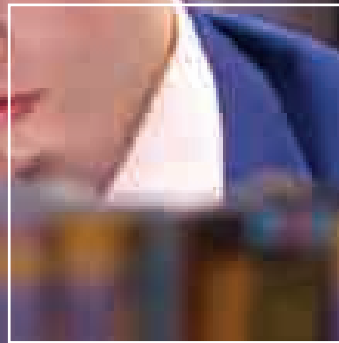
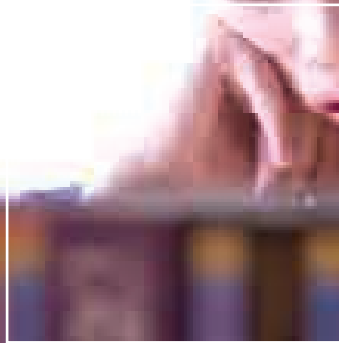
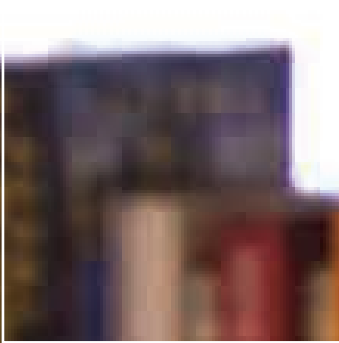
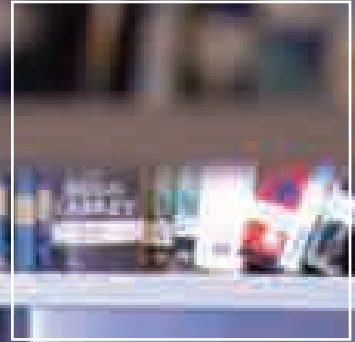
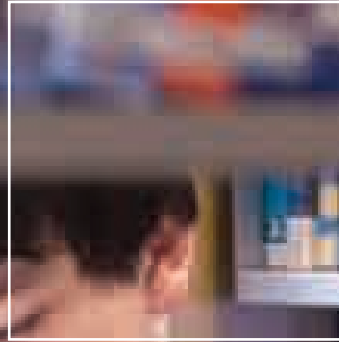
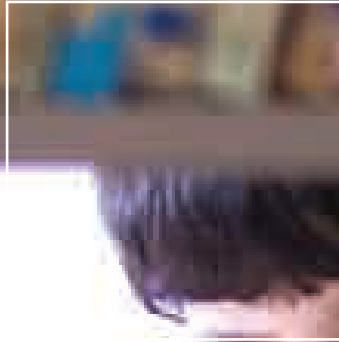
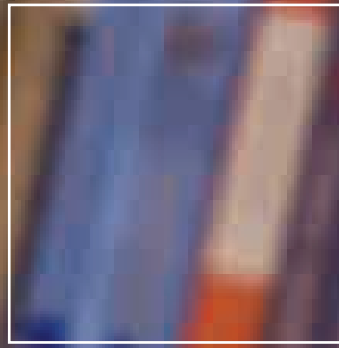
Providing opportunities for 'personal development' are as equally important as academic or vocational qualifications.

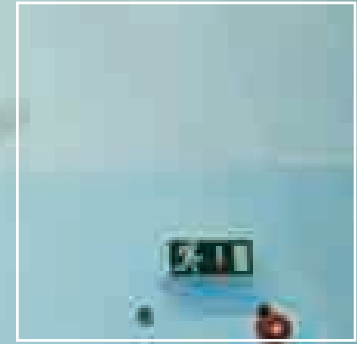
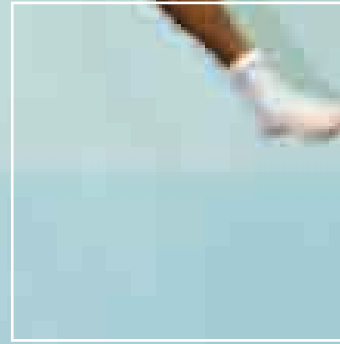
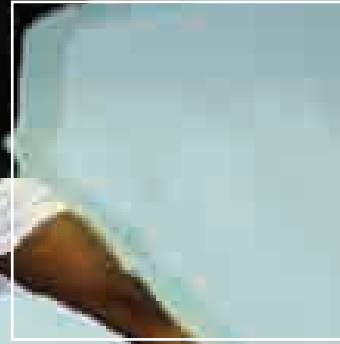
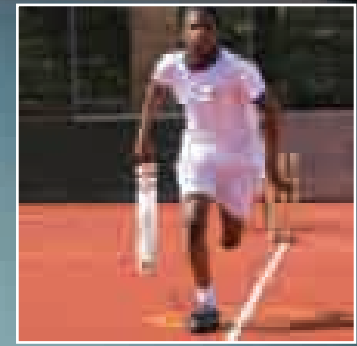
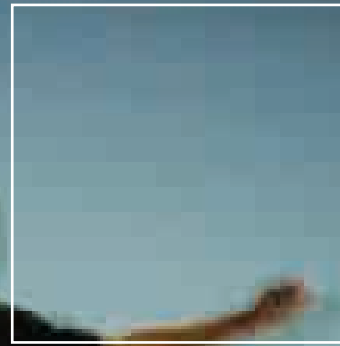
... students aspire to do well because staff recognise those achievements ...

At Bacon's there are many such opportunities provided through the curriculum or beyond.

All of our students have a curriculum appropriate for them. There is rightly a lot of emphasis placed on core subjects – English, Maths and Science, but everyone benefits from our Digital & Media Technology specialism and all students will have IT skills to enhance their employability on leaving the College.







A Healthy College

Our status

Bacon's has achieved 'Healthy School Status' and takes this responsibility very seriously. As well as the College Chaplain, we have two Counsellors and a highly skilled Student Welfare Team drawn from the local community and able thereby to both understand and support our students.

Food is of particular importance to our students and the College employs a catering company which emphasises fresh food and healthy eating and even provides a breakfast facility.

There are extensive sports related activities from trampolining to dance. We have specialist coaches for table tennis and basketball and encourage all students to be active.

There is an emotional health programme for all students from 11-19 years of age. Within this programme there is a sex and relationship course delivered by

trained, specialist members of staff. There is also a sexual health clinic supported by a programme of workshops.

The College has its own School Beat Officer and access to community police support officers – who collectively ensure student safety to and from College.



‘ ... the community police officers have made a real difference. It feels a lot safer in the local area now ... ’

Support, Guidance & Challenge

How we achieve it

At Bacon's we believe that each student needs guidance and support as well as being challenged, to make progress and in order to be successful.

The College employs a Careers Guidance specialist who works with students across the whole age range. We also have a team of 'mentors' who work with our students and provide invaluable support and challenge. Some of these mentors are specialists who are members of the College staff, others are drawn from beyond the College, for example staff from Ernst & Young, an international accountancy company with offices at More London.

The College operates a peer mediation service which is staffed by sixth form students who are professionally trained. These 'mediators' gain hugely from this experience in terms of their own personal development and provide a valuable service to the whole College by helping defuse arguments and resolving disputes among younger students.

The tutor group is the key unit in our pastoral support system and the tutor is the main source of support, challenge and guidance for each student. Tutor groups are expected to take part in assemblies, sporting events and fund raising activities. Each member of the tutor group will have targets set and monitored by their tutor.

Students who are challenged by having a special educational need are well supported at Bacon's. We have a highly

... there are a lot of qualified coaches who encourage you ...

experienced Learning Development Team with extensive experience and specialist skills in a range of special needs including dyslexia, visual impairment and physical disability. The College has good provision for disabled access with two disabled lifts, dedicated disabled toilets and specially designed doors. The College has policies covering fair treatment of disabled students and staff and for students with special educational needs; both are reviewed annually by Governors.

For those students with particular gifts and talents, a range of opportunities are provided for example, through links with the Laban Dance Centre, local theatre groups and links with Chelsea FC Academy. In addition, we have a Debating Society which is organised and led by sixth form students and good links with admission tutors of Russell Group universities. Each year a number of students from Years 9-12 are introduced to Oxford and Cambridge Universities as part of a link programme.

There is an extensive work related learning programme which includes: work experience, a programme of guest speakers covering a wide range of occupations and professions, a student-to-work day and a preparing for employment skills course.



“ ... for a lot of people coming to College is quite an eye opener. It’s a way of learning about how other people live ... ”

Students

Taking part in the life of the College

Bacon's students are drawn from a diverse local community and represent a wide range of ethnic, social and faith backgrounds.

Students are placed in tutor groups of approximately 23 students and will remain with that tutor through to Year 11 if possible.

On entry to Bacon's students are placed in mixed ability teaching groups (based on tutor groups) for the autumn term of Year 7. After this period, they are placed in broad ability groupings which can then be 'set' by curriculum areas. The teaching groups are reviewed twice a year and re-grouping can on occasion take place.

Students are expected to take a full part in the life of the College and there are many opportunities for students to make a contribution and to undertake activities that will help their personal development.

The College has a Head Boy/Head Girl, a College Leadership Team drawn from the sixth form and a College Council which represents all of the student body and meets with the Principal once a fortnight.

... contributing to
College life really helps
personal development ...

The College day is as follows;

7.45 - 8.30	Breakfast Service
8.15 - 8.30	Resource Centre open
8.40 - 9.00	Tutor time/morning registration
9.00 - 10.00	Lesson 1
10.00 - 11.00	Lesson 2
11.00 - 11.20	Morning break
11.20 - 12.20	Lesson 3
12.20 - 2.20	Lesson 4 including a 40 minute lunch break
2.20 - 3.20	Lesson 5
3.20 - 3.25	Afternoon registration

Each Monday morning at 9.00am the whole College gathers for an assembly in the Great Hall. Students will also have a year assembly on a fortnightly basis.

3.30 - 5.00	Resource Centre including Homework Club Extra curricular activities
-------------	--

Facilities & Resources

We have the technology

... there are always new developments like the Media Centre ...

platforms. This technology permeates all curriculum areas and we expect each student to develop good generic skills in IT or indeed pursue more specialist IT courses.

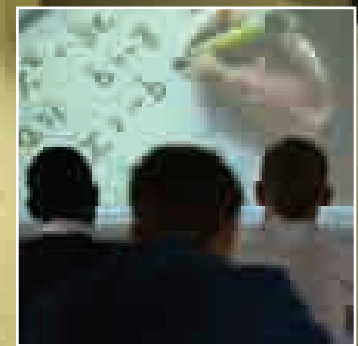
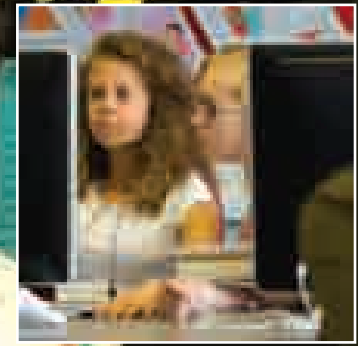
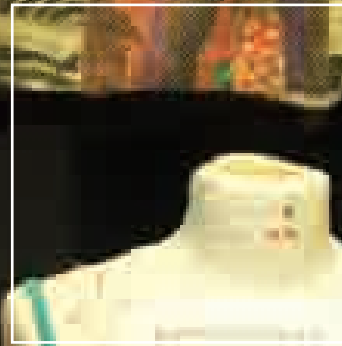
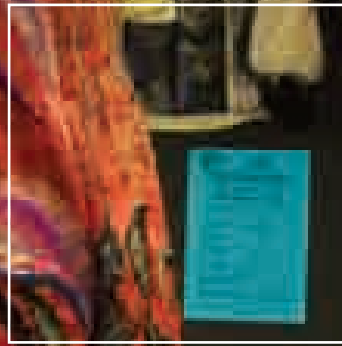
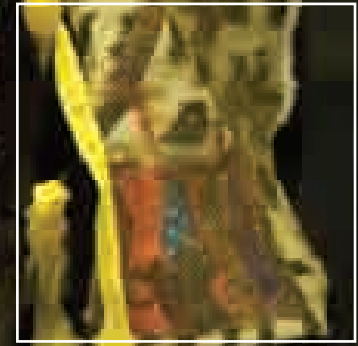
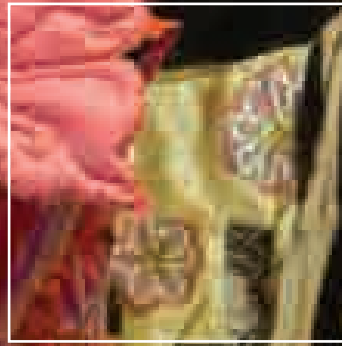
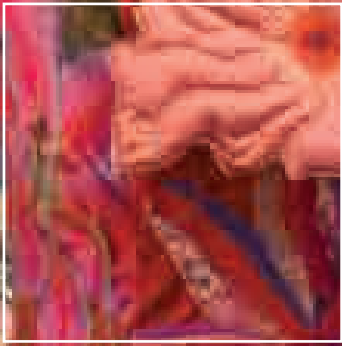
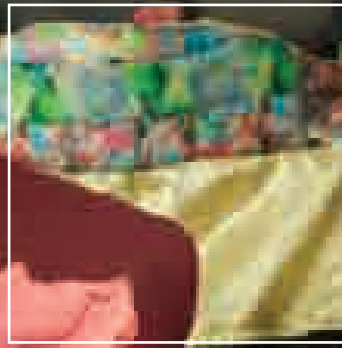
We have a separate centre for our sixth form students including both a study centre and a common room.

The College has modern buildings and high levels of resourcing.

There are many high-tec learning areas as befits our status as an Academy with a specialism in Digital and Media Technology. We have both Apple and PC

The College has outstanding facilities for sport, including a full size third generation artificial pitch and full size grass pitches.





“ ... if students do well, the College is happy to reward it ... ”

Community Partnerships

We aim to be an 'outward facing' College which prepares our students for life and work in the wider community.

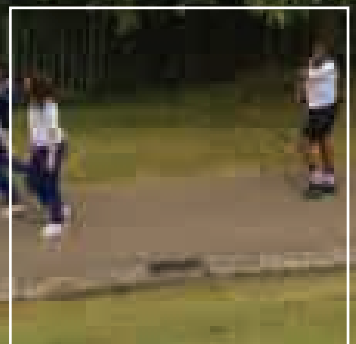
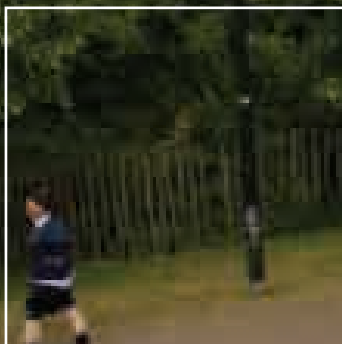
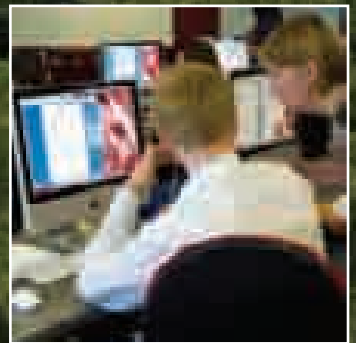
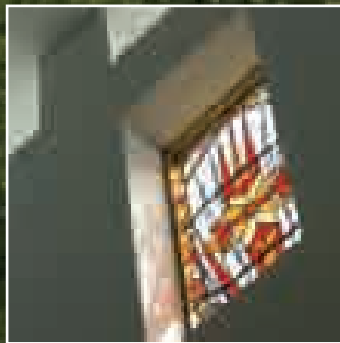
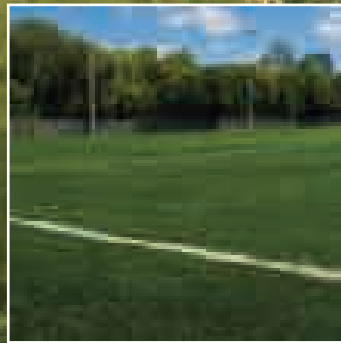
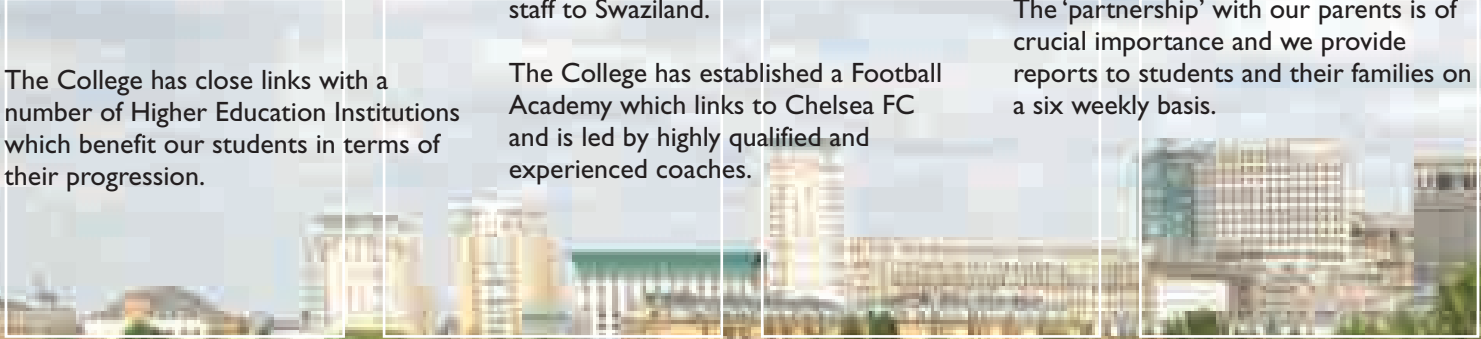
We have an ongoing link with the Swaziland Charitable Trust and have not only raised significant funds for much needed resources through our Christmas fund raising appeal, but are now sending sixth form students and staff to Swaziland.

We have strong and productive links with a number of large corporate organisations: Ernst & Young are our main partner and provide a range of opportunities for our students.

The College has close links with a number of Higher Education Institutions which benefit our students in terms of their progression.

The College has established a Football Academy which links to Chelsea FC and is led by highly qualified and experienced coaches.

The 'partnership' with our parents is of crucial importance and we provide reports to students and their families on a six weekly basis.



... charity appeals
bring the whole
College together ...